



Veteran's Administration

Atlanta, GA

Project Size

7,356 sq ft

Construction

UBC Type II-N

Contract Type

Design-build

Stipulated Sum

Facility Use

Outpatient Clinic

Description

Two-story all steel construction

Architectural aluminum panel exterior

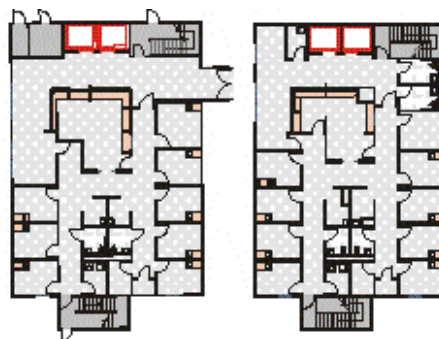
Spandrel window glazing

Twin holeless elevators

Completion

165 days

Pier & Beam
Permanent
Modular
Construction



When the Veterans Administration looked to expand the clinic space at the existing hospital in Atlanta, GA they chose an all-steel two-story permanent modular building. Comprising 7,356 square feet, the construction project requirements called for minimal disruption to the existing parking area, requiring the entire installation of the modular sections to be completed in just one weekend.

The building features an architectural aluminum panel exterior, spandrel window glazing, medical gasses integrated with the existing structure, and twin holeless elevators.

RAMTECH
Building Systems
800-568-9376
ramtechmodular.com