

Project Size

6,480 sq ft

Construction

IBC Type V-b

Contract Type

BuyBoard

Facility Use

Skilled Nursing
Education

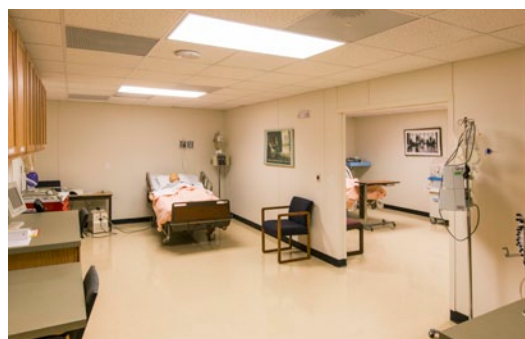
Description

Classrooms and skilled
nursing training facility

Completion

90 days

Modular
Construction



This 6,480 square foot facility provides skilled nursing training and classroom space for UT Tyler's degreed nursing program at the University's Palestine campus. Built using traditional permanent modular construction, the building has a brick veneer over the parapet wall construction on the two visible elevations which blends in with the exterior of the adjacent multi-story campus facility. The wood framed structure has 480/277 volt electrical service and uses split system HVAC units for heating and cooling. The interior utilizes vinyl covered gypsum wall coverings throughout the facility along with VCT tile flooring in the hallways and training areas and carpet tiles in each of classrooms.